

Belvedere Place, SW2

2 bedroom flat - purpose built to let

£438 Per Week

Unfurnished

Property Details

Stunning two bedroom flat set in a little community of modern flats and mews houses have always been popular and we've had excellent reviews by those who have rented them since they were built in 2000. As far as locations go, it's hard to beat: a five-minute stroll down Acre Lane and then will themselves in the heart of Brixton, with the Ritzy Cinema, Brixton Village, Pop Brixton and everything in between. Brixton tube station, first stop on the Victoria Line, arguably the best Underground line, is within a stone's throw - ready to whisk you into central London within ten to fifteen minutes.

The property is arranged over the third floor and comprises an attractive open plan living area, offering great dimensions to lounge as well as dine plus a well-equipped kitchen. The principal bedroom is a generous in size and the second bedroom is versatile which can be used as a home office/study. The contemporary family-sized bathroom completes the property. Access to loft storage as well as built-in options within the flat provide great options for storing away all those items unused on a regular basis. The property further benefits from access to well-maintained shared gardens, ideal for savouring the warmer months.

There are also two large supermarkets on the doorstep, whilst everything Clapham High Street has to offer is a twelve-minute walk in the other direction. You will benefit from the amenities in both areas, a few examples include the green open spaces of Brockwell Park and Clapham Common and all

Features

- Two double bedrooms
- Unfurnished
- Quiet mews development
- Communal gardens
- Central location, close to the action
- Walking distance to Northern and Victoria lines

Council tax band D EPC rating D (62)

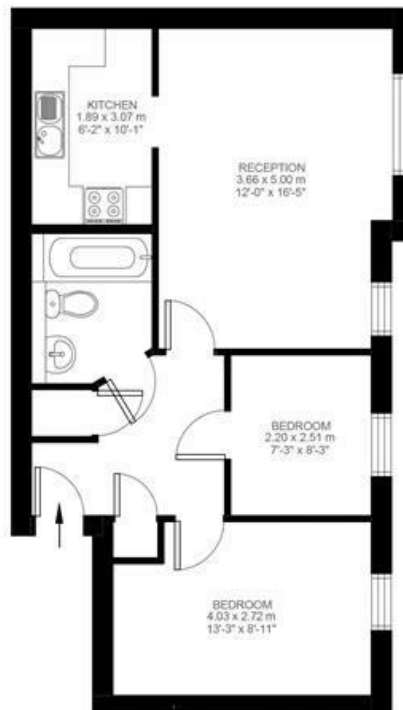


Belvedere Place, SW2

Belvedere Place, Brixton, SW2

2 Bedroom Flat

Approximate internal area: **573 sqft 53 sqm**



Third Floor



While we do try our very best, floor plans are produced as a guide only and we take no responsibility for the precise accuracy with which any property is represented.

Belvedere Place, SW2

